

AC 1200 Wireless USB Adapter Installation Guide



INSTALLATION GUIDE

ZOWEETEK USB Adapter Installation Guide

This manual is divided into three parts: Windows XP, Windows 7 / 8.1/10, and Mac

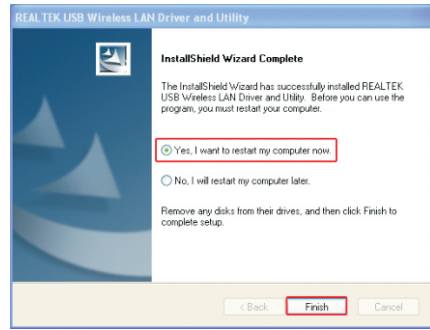
1. Windows XP

Please do the following steps to set up the software on your computer:
Step 1. Please insert the disc into your CD-ROM drive. The disc should auto start, displaying the following window. If it does not start due to the system settings, open My Computer, find the Setup.exe file in the folder "windows" in your CD-ROM directory.



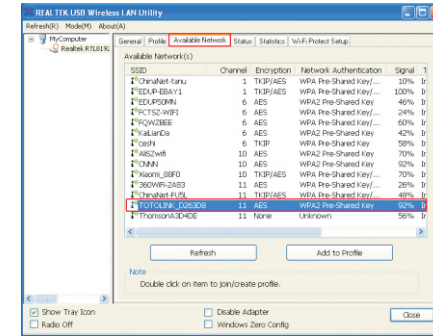
Step 2. Double click the "Setup.exe" file and the software will initialize. Then please choose "I accept the terms of the license agreement" and click "Next".

Step 3. Continue the installation wizard and finish it. You will have to restart your computer for the driver to work.

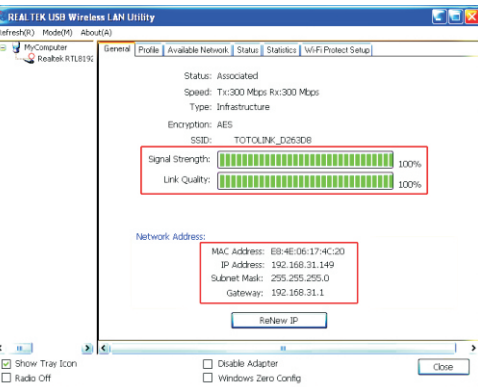
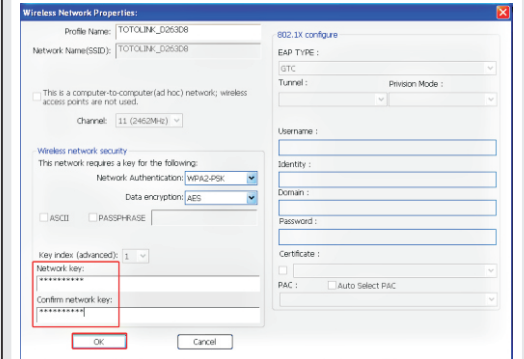


Step 4. Please insert into the wireless USB adapter after the driver installation completed, the computer can recognize it.

Step 5: Click the icon in the Windows system tray, which is located in the bottom-right corner of your computer screen or double click in the bottom-right corner of your computer screen or double click in the bottom-right corner of your computer screen or double click in the bottom-right corner of your computer screen, and select "View Available Wireless Networks" to launch the utility. Find your network in the list of available networks. See image below.



Double click on your network and type in your Network Key (the WiFi security password you chose while setting up your network or the internet provider gave you). You will have to confirm your Network Key.



Now you will have access to the internet.

2. Windows 7 / 8 / 8.1 / 10

This example uses Windows 7, but if you have Win 8 or 10, the steps are the same.

Step 1. Please insert the CD and locate Setup.exe in the folder "windows" in the disc directory.



Step 2. Double click on the Setup.exe file, then continue the installation wizard.

Step 3. You will have to restart your computer for the installation to finish. Click "Yes, I want to restart my computer now," to finish the installation. You may choose to restart it later if you do not wish to restart the computer immediately, but you will not be able to use the adapter without restarting.

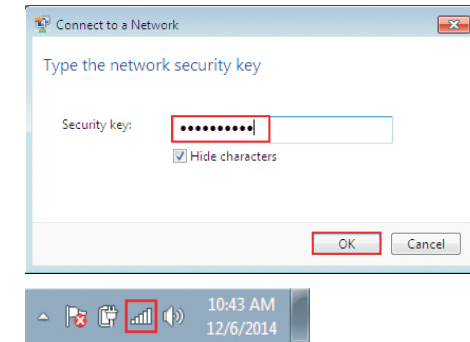
Please insert into the wireless adapter after the driver installation completed, the computer can recognize it.

Step 4: There are two ways to access your network:
 Using the Windows Utility:

Step 4a. Click on the icon in the Windows system tray, which is located in the bottom-right corner of your computer screen and then double click the SSID you preferred (or click "connect" button)

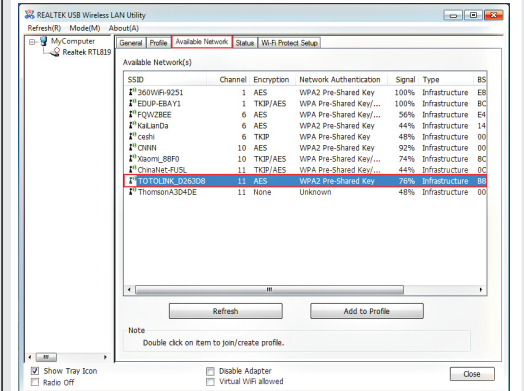


Open the wireless networking page and enter the security key. Click the "OK" button. Then you should have internet access when you open a internet window with any browser.

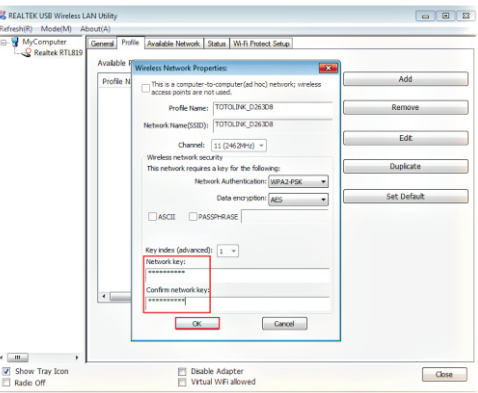


Using the Realtek Utility:

Step 4b. Double click the icon in the Windows system tray, which is located in the bottom-right hand corner of your computer screen, and click on the "Available Networks" button Choose wireless signal (See figure 2) and double click.

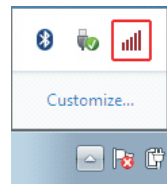


Double Click on your network name and enter your wireless password under Network Key and Confirm Network Key.



Now you will have access to the internet.

Note: If there is no icon, please find it by clicking the small triangle at the bottom right of the screen. It has been hidden as following the picture shows:



3. MAC OSX

Step 1. Unzip the Driver for MAC OS, and then open the file "Installer.pkg".



Step 2. After you install the driver, you'll have to restart your computer.

Step 3. Open your Finder, and then click on "Applications", find the "Wireless Network Utility" file, and click to open it.



Step 4. Click the "Available Network", and then choose your WiFi network, and click "Connect", type your password and you can get access to the Internet.

