

Dual Band USB Wireless Adapter

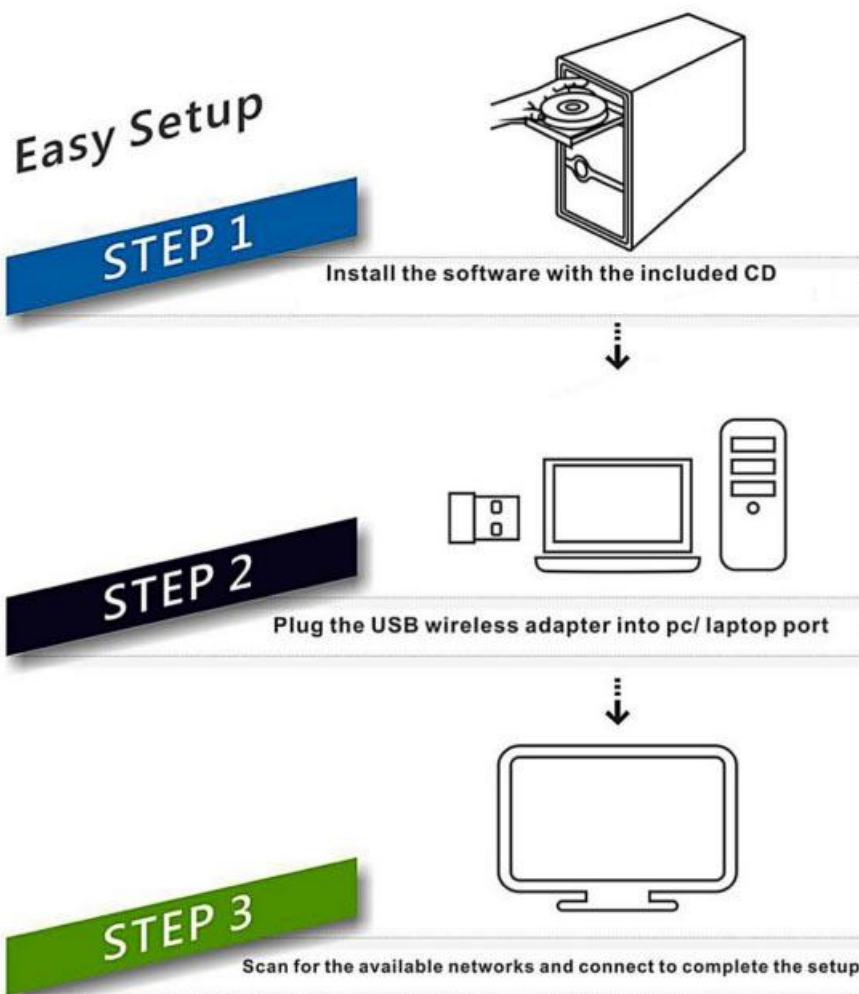
User Manual

1. Introduction

Thank you for purchasing the wireless 802.11b/g/n/a/ac USB adapter! This adapter is mini size design and you are able to plug it into the USB port. Excepting common wireless standards 802.11b/g/n, this wireless adapter is also 802.11ac compatible - data transfer rate is 150/433Mbps, and that's three times faster than 802.11g wireless network!

The following contents should be found in your box:

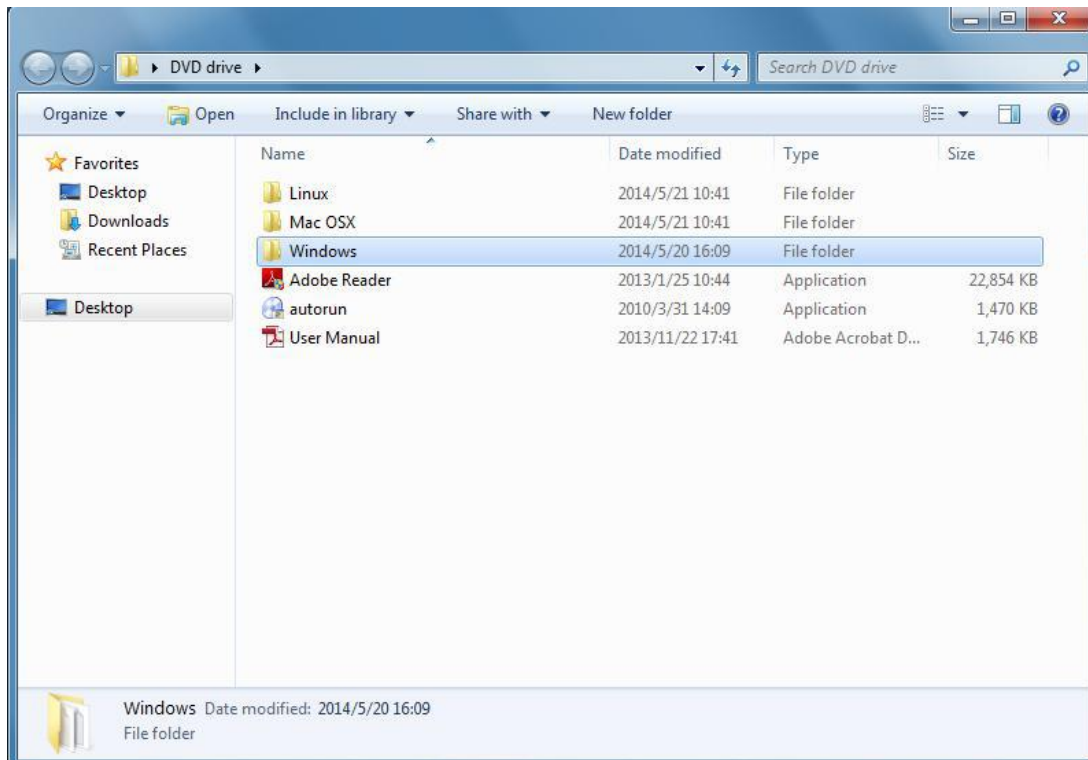
- ◆ One Wireless USB adapter with antenna
- ◆ One CD driver
- ◆ One User manual



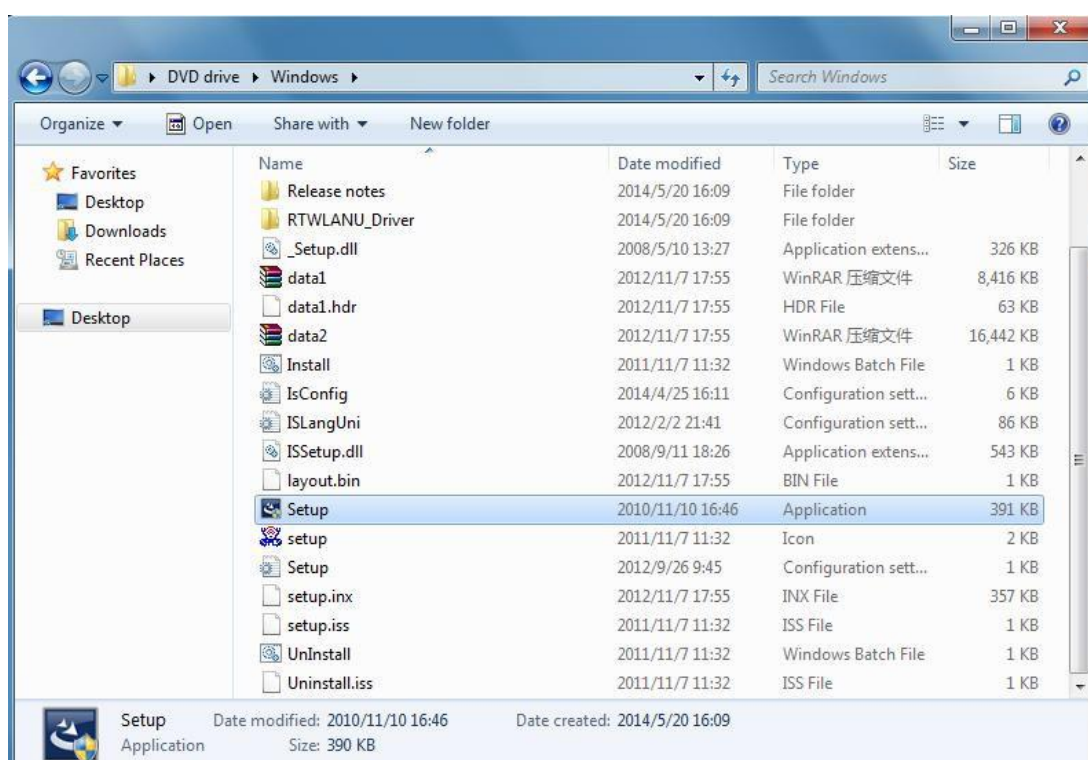
2: Quick Installation Guide

1. Insert CD in your computer s CD drive, double click **OR** you can open the D drive.

2. **Windows/Mac/Linux**



3. Select **Win/Mac/Linux** ,follow the direction to finish the installation
4. 2.Double left-click on the **setup.exe** file and follow the direction to finish the installation.



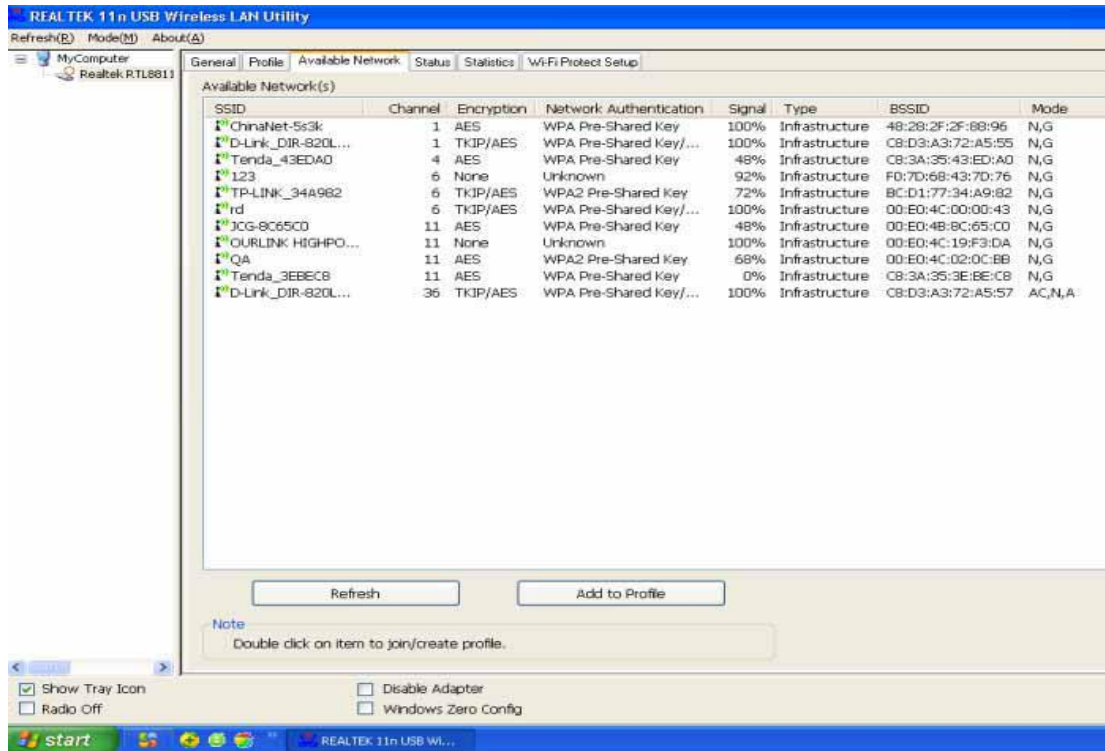
5. Once the installation is finished the computer will be asked to reboot. you can click '**Finish**' and reboot the computer to finish the installation of driver files.



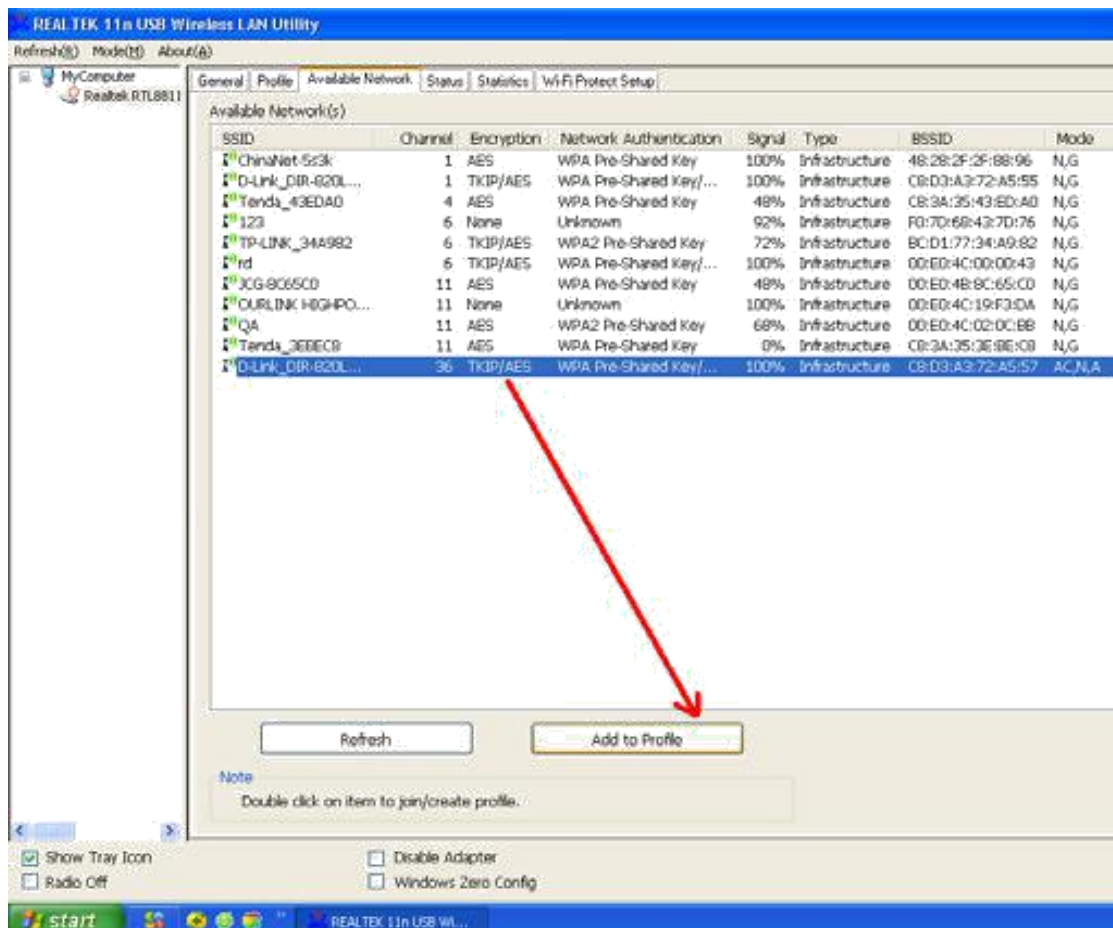
A new icon will appear near the clock of system tray:
Connect to the Internet:



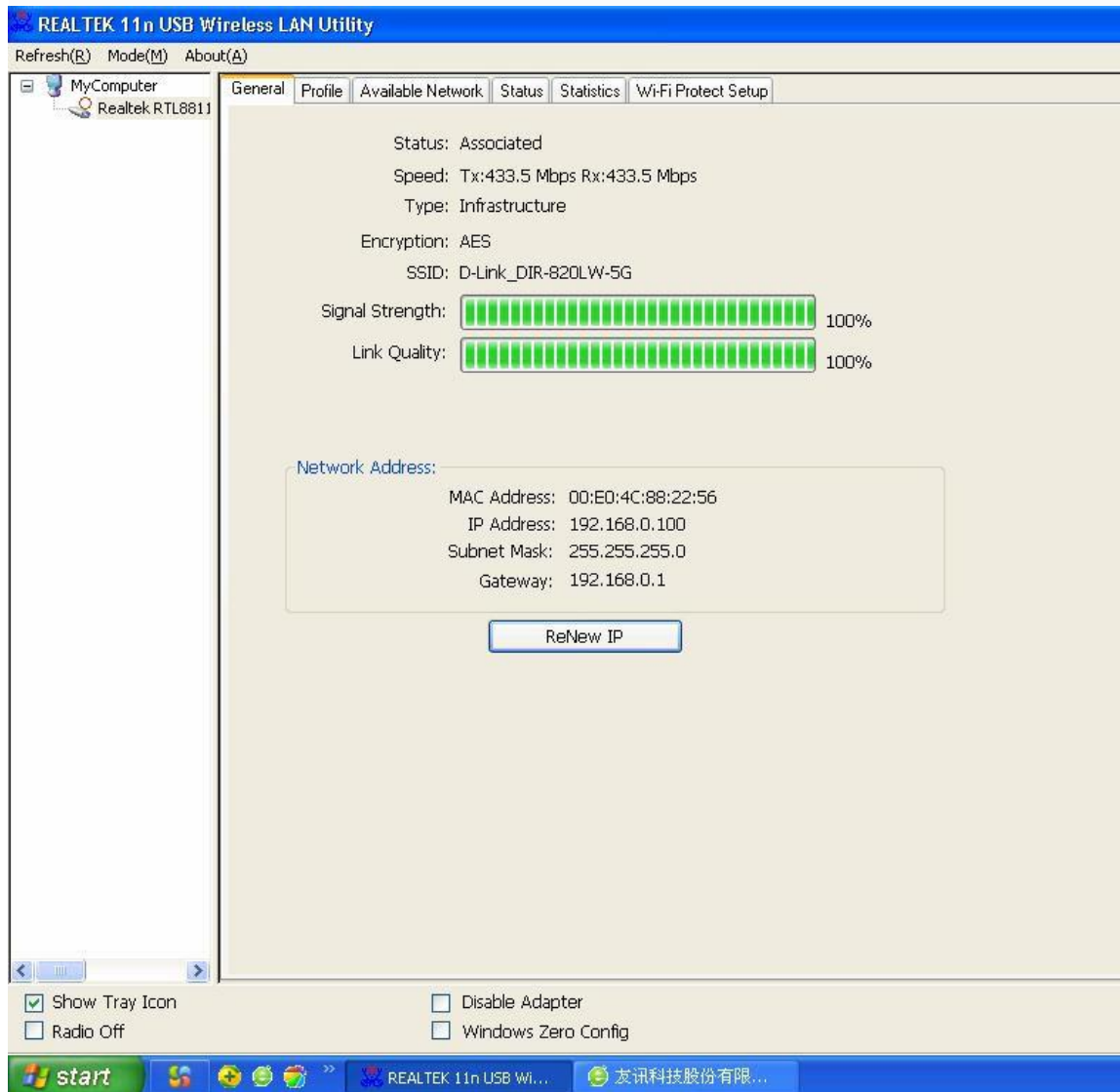
Wireless utility will appear. Click '**Available Network**' menu to search for wireless access points nearby.



Choose your network and enter the password



Connection successful(if you entered the password,but network don't work,pls try to return your Router)

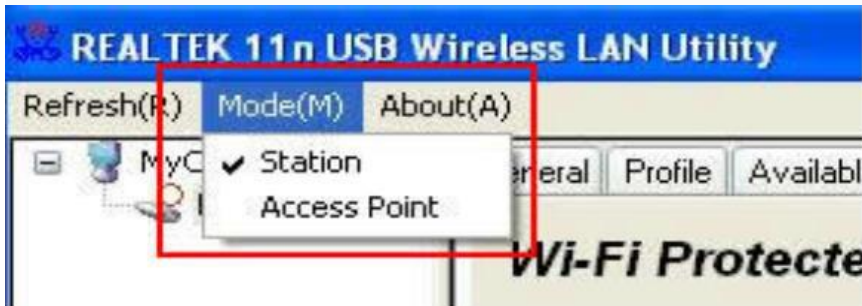


3.AP mode for Win8.1/8/7/vista/xp/2000

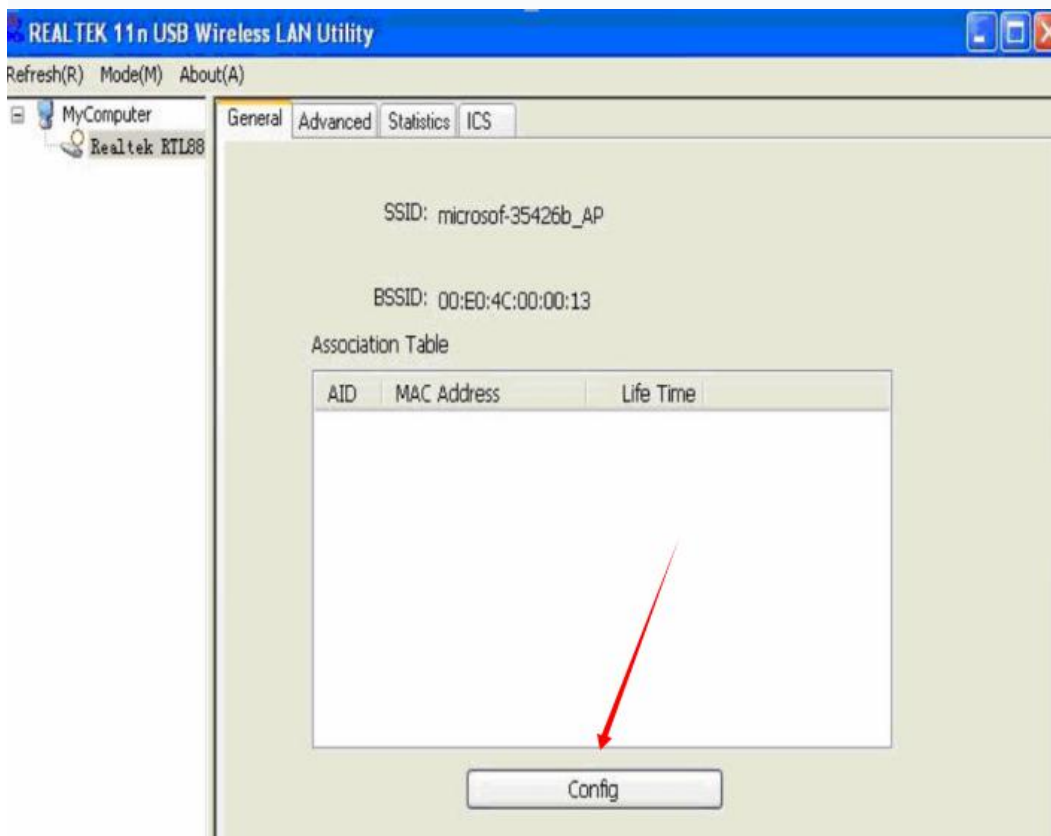
Right-click Client configuration utility icon, and click **Open Config Utility**



Select **Mode** and then select **Access Point** .



It requires few seconds to switch to AP mode, please be patient



Client mode icon



AP mode icon



Configure SSID and Channel

Please note that Ad-Hoc mode is not available when network card is in AP mode



4.Quick Installation Guide for MAC

