

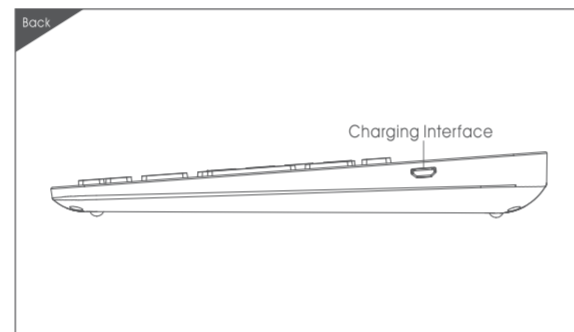
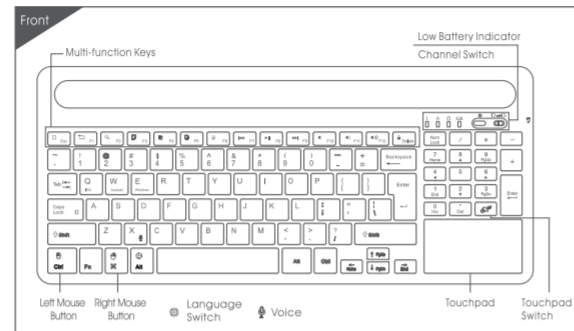
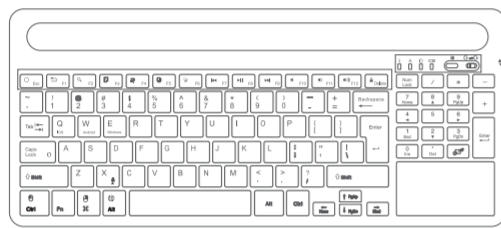
折线

折线

折线

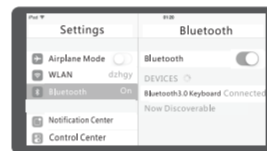
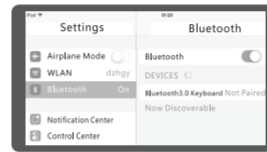
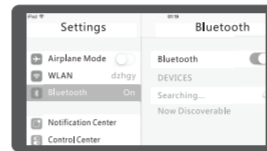


Multi-channel Keyboard User Manual



• iOS/Mac Connection Instructions:

Numeric Keys Bluetooth Light Power Switch Charging Indicator



1. Press the Power Switch for 1 second to turn the keyboard on. The Bluetooth Light will flash blue once to indicate the keyboard has been turned on. (Press the Power Switch for 4s seconds to turn the keyboard off. The Power Light will flash red once to indicate the keyboard has been turned off.)

2. Press **Fn** + **Cap Lock** for code pairing. The Bluetooth light will keep flashing blue, which means the device goes into the pairing mode.

3. Turn on the Bluetooth of your devices and start the pairing. (Mac: Open System Preferences and select Bluetooth to start the pairing.)

4. The Bluetooth dialogue box displays a list of nearby Bluetooth devices that are in discovery mode, as well as devices paired to the device. Click Bluetooth 3.0 Keyboard to connect to Bluetooth.

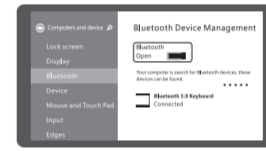
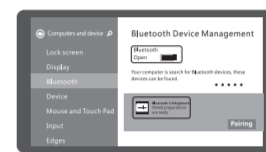
5. Follow the pairing instructions on the screen for your device. Then, type the pin (pairing code numbers) on the keyboard and press "Enter".

6. Your keyboard is now paired with your computer and ready to use.

Multi-channel Switch:
Switch between **B1** ↔ **B2** to any paired one freely while being connected with two devices simultaneously.

• Windows Connection Instructions:

Numeric Keys Bluetooth Light Power Switch Charging Indicator



1. Press the Power Switch for 1 second to turn the keyboard on. The Bluetooth Light will flash blue once to indicate the keyboard has been turned on. (Press the Power Switch for 4s seconds to turn the keyboard off. The Power Light will flash red once to indicate the keyboard has been turned off.)

2. Press **Fn** + **Cap Lock** for code pairing. The Bluetooth light will keep flashing blue, which means the device goes into the pairing mode.

3. Turn on the Bluetooth of your devices and start the pairing.

4. The Bluetooth dialogue box displays a list of nearby Bluetooth devices that are in discovery mode, as well as devices paired to the device. Click Bluetooth 3.0 Keyboard to connect to Bluetooth.

5. Follow the pairing instructions on the screen for your device. Then, type the pin (pairing code numbers) on the keyboard and press "Enter".

6. Your keyboard is now paired with your computer and ready to use.

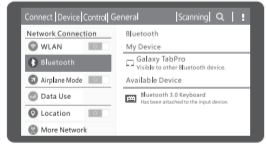
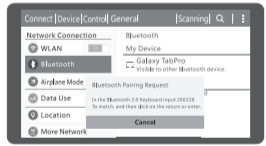
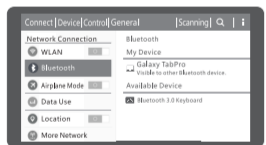
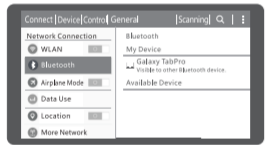
Multi-channel Switch:
Switch between **B1** ↔ **B2** to any paired one freely while being connected with two devices simultaneously.

折线

折线

• Android Connection Instructions:

Numeric Keys Bluetooth Light Power Switch Charging Indicator



1. Press the Power Switch for 1 second to turn the keyboard on. The Bluetooth Light will flash blue once to indicate the keyboard has been turned on. (Press the Power Switch for 4s seconds to turn the keyboard off. The Power Light will flash red once to indicate the keyboard has been turned off.)

2. Press **Fn** + **Cap Lock** for code pairing. The Bluetooth light will keep flashing blue, which means the device goes into the pairing mode.

3. Turn on the Bluetooth of your devices and start the pairing.

4. The Bluetooth dialogue box displays a list of nearby Bluetooth devices that are in discovery mode, as well as devices paired to the device. Click Bluetooth 3.0 Keyboard to connect to Bluetooth.

5. Follow the pairing instructions on the screen for your device. Then, type the pin (pairing code numbers) on the keyboard and press "Enter".

6. Your keyboard is now paired with your computer and ready to use.

Multi-channel Switch:
Switch between **B1** ↔ **B2** to any paired one freely while being connected with two devices simultaneously.

Remarks : After connecting successfully for once, no more code pairing needed next time. Just turn on the power switch in the Bluetooth keyboard and enable the "tablet PC" Bluetooth.

Technical Specifications

- Keyboard Size : 14.57*6.48*0.88 inch
- Touchpad Size : 2.83*1.53 inch
- Working Distance : 33ft
- Weight : 1.33lb
- Keyboard Layout : 96 Keys
- Sleep Time : 20 Minutes
- Wake up the device : Press any key
- Battery Capacity : 370mAh
- Working Time : 150~200 hours
- Charging Current : <250mA
- Charging Time : 2 hours
- Working Voltage : 3.7V
- Low Voltage Alarm : <3.3V
- Standby Current : 0.85mA
- Sleep Current : 0.1mA
- Working current of touchpad : 6.8-10.36mA
- Working current of Keys : 2.0mA

Status Display LED

- When you turn the keyboard on, the Bluetooth Light will flash blue once.
- During the code pairing, the Bluetooth Light will flash intensely.
- Once successfully pair the keyboard to your devices, the Bluetooth Light will be off.
- When keyboard is low battery (Low voltage), the Power Light will flash red.
- When keyboard is in charging status, the Power Light will stay green.
- Once the keyboard has been fully charged, the Power Light will be off.

Keyboard Maintenance

1. Please keep the keyboard away from liquid, humid or flame environment.
2. Please don't expose the keyboard to environment with extremely high or low temperature. Please don't place the keyboard under sun for a long time. Please clean the keyboard with dry cloth.
3. Do not open or repair this keyboard. The keyboard has one-year warranty.

Note

If you meet keyboard connection issues, please try following ways:

1. Please ensure this keyboard is in code pairing status.
2. Please fully charge this keyboard and try to use it again. Low battery will effect the usage of the touchpad.
3. If you don't use this keyboard within 20 minutes, the keyboard will automatically sleep. You need to press any key and wait for a few seconds to wake it up.
4. If you type in wrong code for many times when pairing, it may require you to type in PIN code to pair again. In this case, please reset the bluetooth function and pair again. If it still appears dialogue box to require PIN code and prompt you type in some characters, you need to use other keyboard to type four numbers (such as 1234) into the dialogue box and click the Connect button. Then press the same number on this keyboard and press the Enter key to finish pairing.
5. You can pair this keyboard to your smart phone, which can prove whether this keyboard works normally. If the keyboard can work well with your smart phone, maybe your computer bluetooth adapter is not compatible with this keyboard. Please try to other bluetooth adapters (For this case, we have attached one bluetooth adapter in the package).

Three System Function Key Combinations(fn+)

	Fn+ iOS Apple iOS System	Fn+ Android Switch to Android System	Fn+ Win Switch to Win System
Esc	Return to desktop	Return to desktop	Fn+ Esc Home Page
F1	Esc	Return to the previous page	Fn+ F1 Return
F2	Search	Search	Fn+ F2 Search
F3	Select All	Select All	Fn+ F3 Select All
F4	Cut	Cut	Fn+ F4 Cut
F5	Copy	Copy	Fn+ F5 Copy
F6	Paste	Paste	Fn+ F6 Paste
F7	Previous	Previous	Fn+ F7 Previous
F8	Play/Pause	Play/Pause	Fn+ F8 Play/Pause
F9	Next	Next	Fn+ F9 Next
F10	Mute	Mute	Fn+ F10 Mute
F11	Volume-	Volume-	Fn+ F11 Volume-
F12	Volume+	Volume+	Fn+ F12 Volume+
Delete	Screen Lock	Screen Lock	Fn+ Delete Screen Lock

Touchpad Functions

- Left Mouse Button:** Single finger click
Drag: Single finger click for twice and pressing to move
- Right Mouse Button:** Two fingers click
- Middle Mouse button:** Three fingers click
- Zoom:** Two fingers Stretching
- Vertical Scrolling:** Two fingers sliding vertically
- Open an application:** One finger sliding from
- Back/Forward:** Two fingers sliding horizontally
- ▲ Switch to the next application: One finger sliding from left to right
- ▲ Bring out Win8 Charm menu: One finger sliding from right to left

Warranty Card

User information _____

Company or personal full name _____

Contact address _____

Tel. _____ Zip _____

Purchased product' s name and model NO. _____

Purchase date _____

Problems or damage relating to below reasons are not included in this limited warranty.
(1) Accident, misuse, improper operation or any unauthorized repair, conversion or disassembly.
(2) Improper operation or maintenance, violation against the instructions or connection with unsuitable power supply.



折线

折线

折线

尺寸 : 85x130mm 折页